

# SynthiaPC Quick Installation Guide

Installing SynthiaPC has several steps that need to be accomplished. The steps required if you are only evaluating SynthiaPC are to install the SynthiaPC program, install and setup the MidiOx program and to download the music database into your PC. If you have purchased additional optional hardware items, ie the USB Midi Cable and an IR Remote controller, you may have to install their respective USB drivers.

If you have downloaded a zipped evaluation copy of SynthiaPC, you will need to unzip the downloaded file. If you downloaded a 'full' SynthiaPC evaluation file, you can use it directly as you would from a CD, just follow the software / database installation instructions shown below.

## 2.1 Packing List

If you purchased the optional hardware items for SynthiaPC, then the following items may be shipped depending on the options you selected.



- **IR Remote** – This 'line of sight' Infra Red remote controller provides multiple discrete function keys to control the operation of SynthiaPC. This IR remote controller consists of two parts. The first is the hand-held controller itself and the second is the IR USB receiver which plugs into your PC. The use of this controller will require the installation of it's USB driver.

- **USB Midi Cable** - Included with SynthiaPC is a general Midi USB cable which connects your PC to a general MIDI keyboard (organ / piano). The end of this cable has an input and an output 5 pin male DIN (round) connecting plug.



- **SynthiaPC User's Guide** – A printed copy of this User's Guide.
- **Software CD** – A CD that contains all of the software, components and libraries needed to install SynthiaPC into your PC. Also, a copy of any music purchased with SynthiaPC will be saved on this CD.

## 2.2 Software Installation

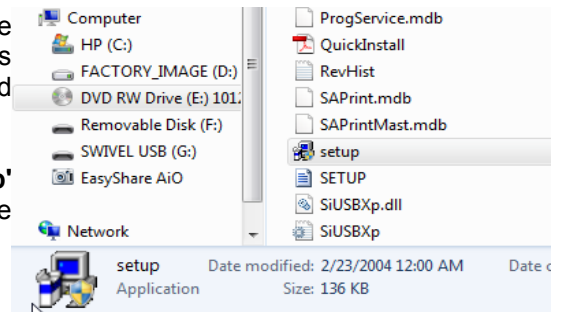
There are up to six steps involved with installing **SynthiaPC's** software and data into your PC. The first is to simply install the **SynthiaPC** main program into your PC by following the steps normally taken to install a Windows (TM) program. Microsoft's **'InstalShield'** (TM) is used here. The second step is to install the **MidiOx** companion Midi Synthesizer / bridge program. The third step is to set up or select the options needed to operate the **MidiOx** program. The fourth step is to run the **SynthiaPC** setup program that will download your initial **SynthiaPC** musical database onto your PC. The fifth and final step is only needed if you wish to use the IR (Infra Red) remote controller. In this step, you will need to install the IR USB driver into your PC. This driver should be installed before attaching the USB IR receiver to your PC.

- **Install Synthia's Runtime PC Program (SynthiaPC)**

1) If you are downloading **SynthiaPC** from the internet, be sure to **'unzip'** the file if it is a zipped file and save its contents in a file directory on your **'C'** drive. If you are using a supplied CD, you can simply access it directly.

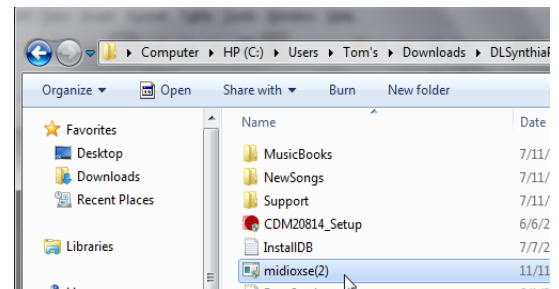
2) Using **'Windows File Explorer'** browse to the **'SetUp'** program located in the root CD or downloaded installation file and double click.

3) Follow the instructions / process from **'InstalShield'**



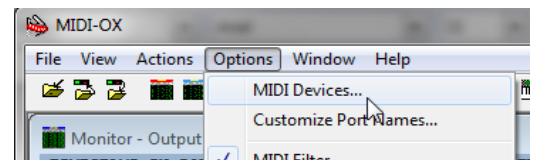
- **Install MidiOx Program**

Before you can use SynthiaPC for the first time, you will need to install the **'MidiOx'** program. After this installation, whenever **SynthiaPC** is run, it will automatically start up the companion **MidiOx** program. Using **'Window's Explorer'** locate **'MidiOxSE'** on the supplied software CD or downloaded file directory and double click. This will install the **MidiOx** program. After installing **MidiOx**, you should run it by itself the first time to 'Set Up' its initial options. After that, when **SynthiaPC** starts up **MidiOx**, its initial 'default' options will be set properly.

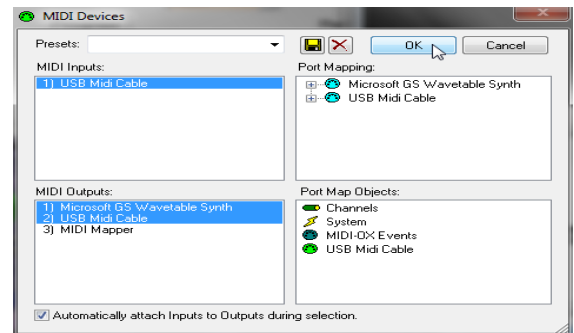


- **Set MidiOx Options**

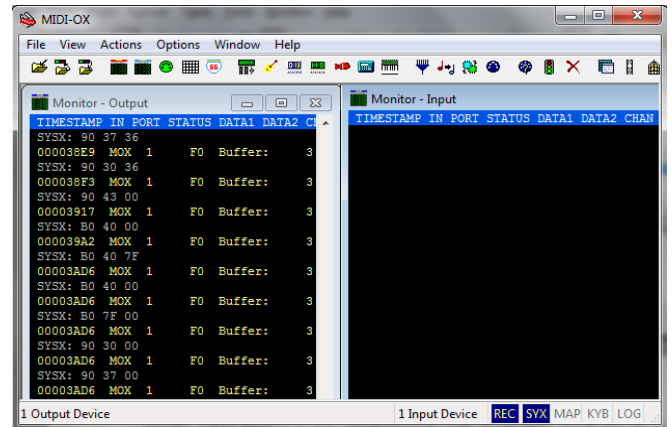
Before you can use **MidiOx** to play music from your **SynthiaPC**, you will need to set up **MidiOx's** MIDI input and output ports. First, run the **MidiOx** program then, located on the **'MidiOx'** screen, click on the **'Midi Devices'** tab located on the **'Options'** menu item.



You will then see the **'Midi Devices'** screen appear which will show you the **Midi Inputs** and **Midi Outputs** as seen by **MidiOx**. Click on (highlight) the Midi ports that you want to activate. To the right, the **USB Midi Cable** is selected as an input and both the **USB Midi Cable** and the **GS Wavetable Synth** are selected for Midi outputs. With this setting, **SynthiaPC** will play Midi music on both the PC synthesizer and out the **USB Midi cable** at the same time. If you have not loaded the USB Midi Cable, (discussed below), you will not see the USB Midi Cable as available. When you click **'OK'**, then these **MidiOX Midi Device** settings will be set as default so that, the next time **MidiOx** is started (when **SynthiaPC** is run), they will be selected.



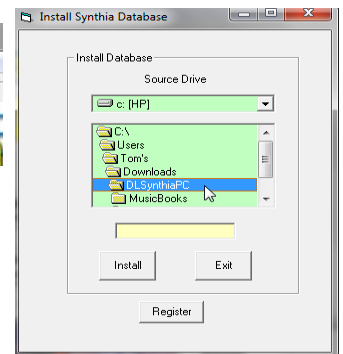
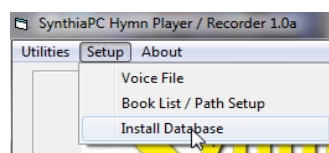
When **MidiOx** is run, you'll see it's run-time screen as shown to the right. Be sure that the **'Rec'** and **'SYX'** items on the bottom are selected. This enables SynthiaPC to communicate with **MidiOx**.



Observing this screen, you can monitor (see) the Midi input and output to and from SynthiaPC and **MidiOx** and other synthesizers (keyboards). You can adjust what you see any way you wish. When you do make these changes, **MidiOx** will remember them as initial **'default'** settings the next time **MidiOx** is started.

- **Download Synthia's Musical Database To Your PC.**

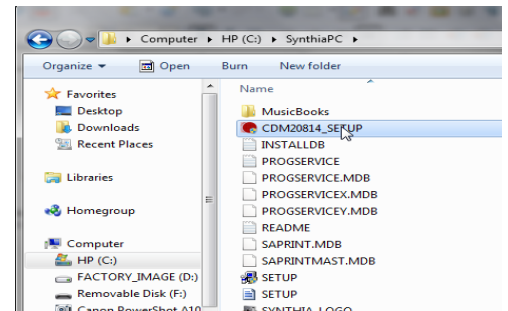
1) Run Synthia's PC program (**SynthiaPC**) which was loaded in the first step above. From its **'Setup'** menu item, select **'Install Database'** and follow its instructions once started. Then, select the 'Source Drive' where your installation CD, flash drive or downloaded file directory is located and press the **'Install'** button. The utility will do the rest and will download and install your initial Synthia musical database.



- **Install IR Remote USB Driver**

If you intend to use the IR remote control, you will need to install it's receiver's USB driver.

1) Using **'Window's Explorer'** locate **'CDM20814\_SETUP'** on the supplied software CD or downloaded file directory and double click. This will install the USB driver to support the IR receiver. **Note: Do not attach the IR receiver to your PC until after it's USB driver has been installed.**



- **Install USB Midi Cable**

The **USB MIDI cable** typically just plugs into your PC and no driver software is needed. If it doesn't work right out of the box, you may need to get a driver and some expert PC help. Another option is to purchase a **USB Midi cable** that comes with a driver. You can buy these online or at music stores.



When first starting **SynthiaPC**, the **MidiOx** companion program will be automatically started. When it comes up, it first checks to see where to direct Midi input and output that it receives and sends. If you do not have a **USB Midi cable** attached, then you will get a warning message telling you of this situation. Just click on **'OK'** to continue and to start up **MidiOx**. Be careful. If this message were to pop up, it may be hidden under some other **'window'**. If so, you will need to locate it and click on **'OK'** before proceeding to use **SynthiaPC**.

